



Time 

TimeX is a premium brand specializing in crafting high-quality and visually appealing metal furniture for both hospitality and domestic settings. With a keen eye for design, TimeX creates pieces that are both stylish and functional, using only the best materials and construction techniques. From sleek chairs to elegant tables and lighting, their furniture is perfect for anyone who desires a touch of luxury in their space. Whether it's a cozy home or a bustling restaurant, TimeX furniture is sure to elevate any environment.





Trio

Trio is a high-quality steel dining table that exemplifies elegant design. Crafted with meticulous attention to detail and durability, it seamlessly blends style and practicality, catering to both home and commercial environments. The table's clever construction consists of two elements repeated three times, allowing for easy disassembly and flat packing. Trio Table's remarkable design has been honoured with the esteemed Kapok design award, solidifying its reputation as a timeless centrepiece for any space.



Mutual

Mutual is a youthful and elegantly designed chair that exudes a vibrant spirit. Its graceful curves, both in the legs and backrest, intertwine and create a harmonious loop, reminiscent of a lively dance. Crafted with a focus on both design and comfort, Mutual effortlessly blends style and functionality. Its exceptional design and material qualities make it a perfect choice for home or a restaurant setting.





Lily

Lily is a slender and sophisticated dining table perfect for both residential and commercial settings. Inspired by the beauty of flowers, its unique design features four tube legs resembling delicate stems, gracefully supporting the table's four petal-like segments that form the tabletop. This original design lends a touch of modernity and vibrancy to any space. Crafted from durable, high-quality steel, Lily Table is built to withstand the test of time while exuding elegance.



Bond

Bond is a sleek and lightweight metal seat designed with attention to details. Drawing inspiration from the elegance of traditional rattan and bamboo chairs, Bond features four metal rings that serve as stylish connectors. These rings add a touch of visual intrigue, reminiscent of the delicate strings that bind rattan chairs elements together. Crafted with precision and using high-quality materials, Bond Chair combines understated beauty with exceptional craftsmanship.





Brooklyn

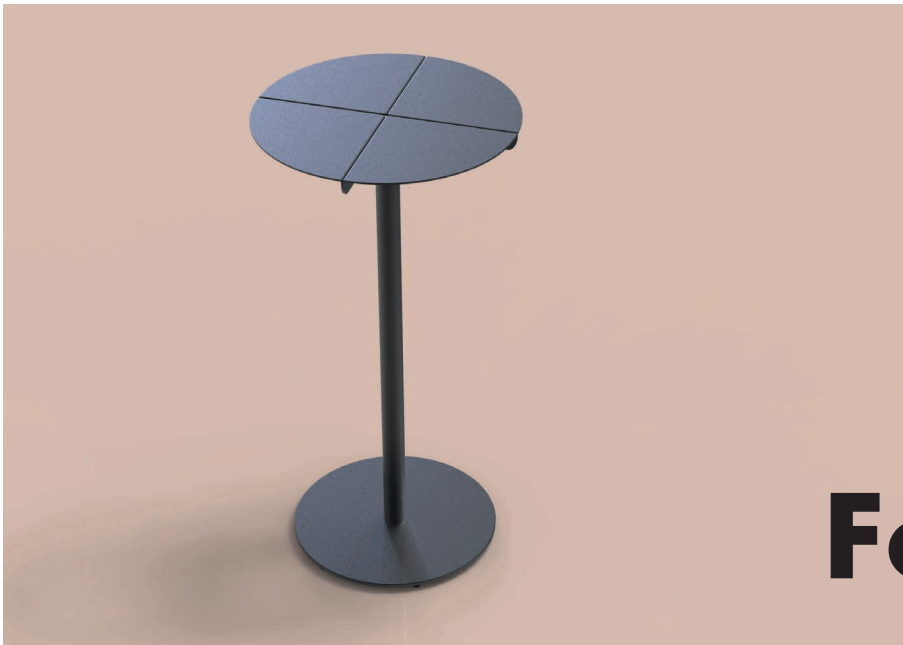
Brooklyn is a contemporary metal cantilever table inspired by suspended architectural marvels like bridges. With its unique design, the tabletop appears to effortlessly float, creating a visually striking focal point. Despite its ethereal appearance, Brooklyn is a sturdy and stable piece of furniture. The standout feature is the elegantly folded corner of the tabletop, gracefully enveloping the table leg. This design element adds a touch of sophistication, making Brooklyn a captivating addition to any space.



Mutual

Mutual is a youthful and elegantly designed bar stool that exudes a vibrant spirit. Its graceful curves, both in the legs and backrest, intertwine and create a harmonious loop, reminiscent of a lively dance. Crafted with a focus on both design and comfort, Mutual effortlessly blends style and functionality. Its exceptional design and material qualities make it a perfect choice for home or a restaurant setting.





Fold

Fold is a sleek and versatile dining table designed to effortlessly adapt to both residential and commercial settings. Inspired by the elegance of simplicity, its design revolves around the mechanical strength of a single fold. What appears to be a flexible and delicate surface transforms into a rigid and durable structure when folded. This construction allows Fold to maintain a slim profile while providing exceptional strength. Experience the perfect blend of minimalism and resilience with the Fold table, a testament to the power of thoughtful design.



Bond

Bond is a sleek and lightweight metal seat designed with attention to details. Drawing inspiration from the elegance of traditional rattan and bamboo chairs, Bond features four metal rings that serve as stylish connectors. These rings add a touch of visual intrigue, reminiscent of the delicate strings that bind rattan chairs elements together. Crafted with precision and using high-quality materials, Bond bar stool combines understated beauty with exceptional craftsmanship.







Anna

skinny Anna

Anna coffee table is a delightful and feminine addition to any space. Its slender and minimalistic round top rests gracefully upon a large cylindrical leg, reminiscent of a young girl's skirt. The undulating bottom of the leg adds a dynamic touch to Anna's overall aesthetic. Crafted with quality materials, Anna is versatile enough to complement both domestic and commercial environments.



Glow

Glow is a sleek and minimalist floor lamp that creates an enchanting ambient light. With its slender design, the light tube gracefully extends from the metal base, casting a captivating line of illumination into the room. Like a delicate stroke of a pen, the vertical light element defines the space with its thin profile. Glow features dimmable lighting, and its smart functionality can be controlled conveniently via the app. Adjust the brightness and customize the light temperature to perfectly suit any environment.



Octo round

Octo rectangular

Octo coffee table is a vibrant and youthful addition to any space. This coffee table is perfect for both home and hotel settings, adding a lively touch to the ambiance. The standout feature of Octo is its four legs, reminiscent of the tentacles of an octopus. Converging at the centre and extending outwards, these legs provide exceptional stability to the table. Octo is available with either a rectangular or round top, and it is expertly crafted using high-quality steel.



Moon

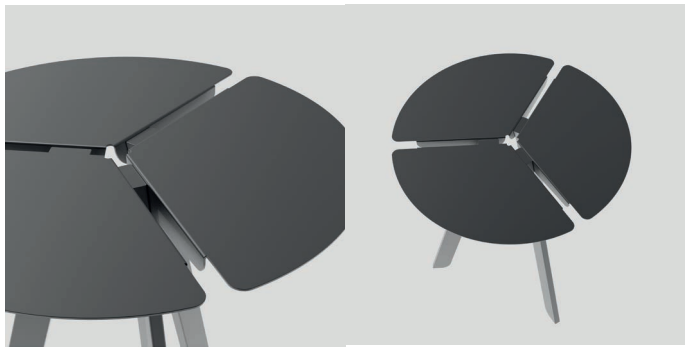


Moon is a sleek and contemporary lighting solution. With its slim design, Moon features a thin stem that protrudes from a wider base, delicately balanced on its tip. The lamp's unique tilting capability allows you to effortlessly adjust the light direction to your preference. Just like Earth's satellite, the Moon does not emit light independently; instead, it reflects sunlight. Similarly, the Moon lamp incorporates a hidden spotlight within its head that projects light onto a reflective panel, resulting in a soft and tranquil downward diffusion, generating a soothing and atmospheric ambiance in any space.





Trio

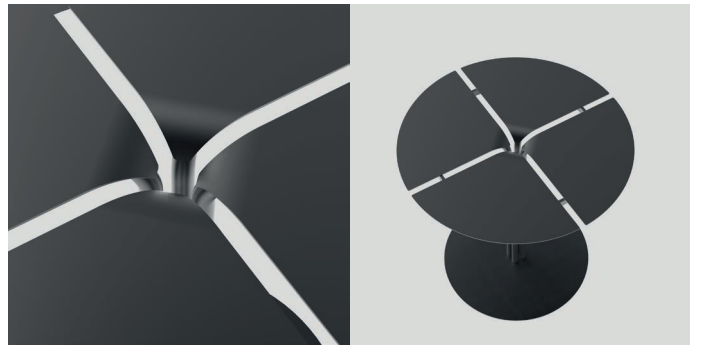


Sizes D: 60cm H: 75cm
D: 50cm H: 55cm
D: 50cm H: 45cm
Weight 10 kg/6.8 kg/ 6.5 kg
Material Steel Q235
Paint finish Textured matte

Colours



Lily



Sizes D: 60cm H: 75cm
Weight 18 kg
Material Steel Q235
Paint finish Textured matte

Colours



Brooklyn



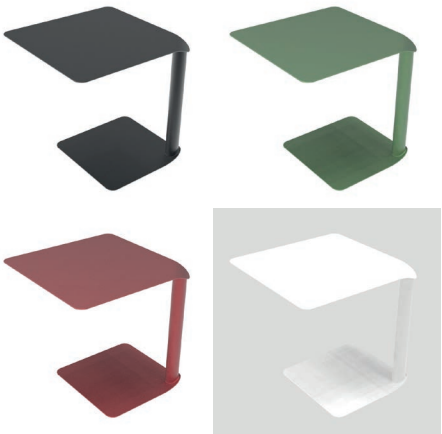
Sizes 40cm 40cm H: 75cm
 40cm 40cm H: 55cm
 40cm 40cm H: 45cm

Weight 7.5 kg/7 kg/ 6 kg

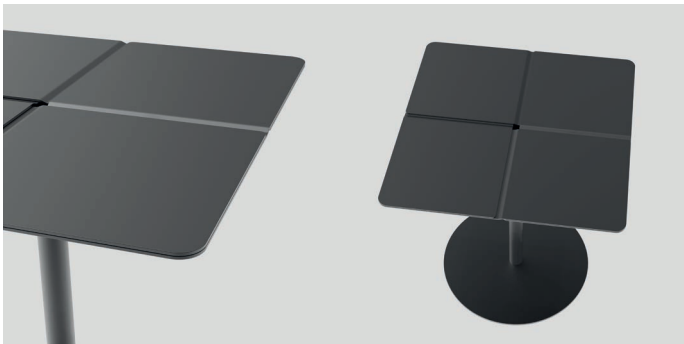
Material Steel Q235

Paint finish Textured matte

Colours



Overlaps



Sizes 60cm 60cm H: 75cm

Weight 25.3 kg

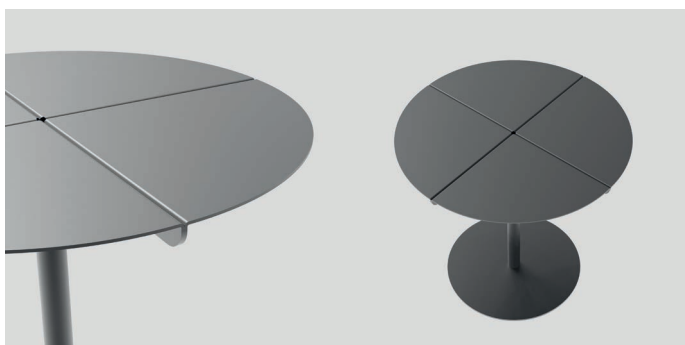
Material Steel Q235

Paint finish Textured matte

Colours



Fold round



Sizes D: 60cm H: 110cm
D: 60cm H: 75cm
D: 50cm H: 45cm

Weight 20 kg/ 19 kg/ 17 kg

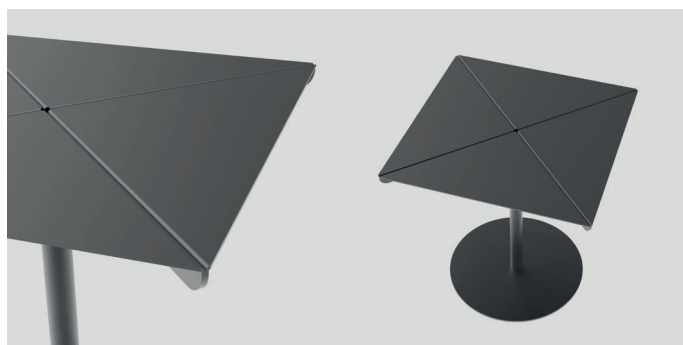
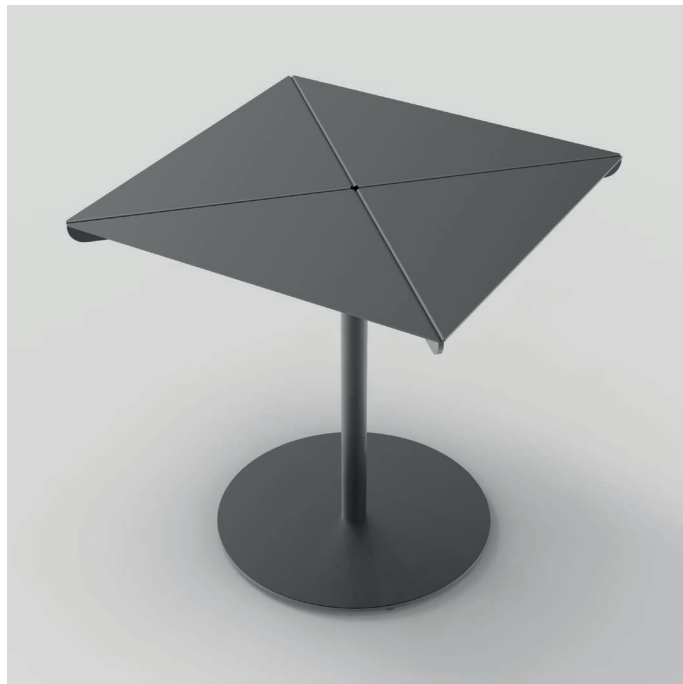
Material Steel Q235

Paint finish Textured matte

Colours



Fold square



Sizes 60cm 60cm H: 110cm
60cm 60cm H: 75cm

Weight 25 kg/ 24.4 kg

Material Steel Q235

Paint finish Textured matte

Colours



Bond



Sizes 50cm 53cm H: 76cm
seat at 45cm

Weight 6.5 kg

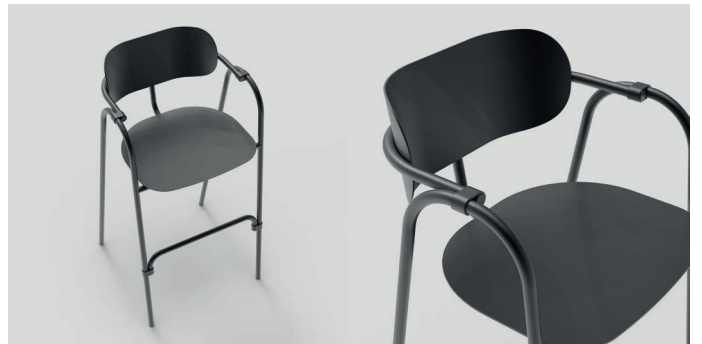
Material Steel Q235

Paint finish Textured matte

Colours



Bond bar stool



Sizes 51cm 50cm H: 86cm
seat at 75cm

Weight 7.5 kg

Material Steel Q235

Paint finish Textured matte

Colours



Mutual



Sizes 54cm 45cm H: 69cm
seat at 45cm

Weight 8.6 kg

Material Steel Q235

Paint finish Textured matte/Glossy

Colours



Mutual bar stool



Sizes 51cm 50cm H: 85cm
seat at 75cm

Weight 7.7 kg

Material Steel Q235

Paint finish Textured matte

Colours



Octo round



Sizes D:50cm H: 40cm
Weight 9 kg
Material Steel Q235
Paint finish Textured matte/glossy

Colours



Octo rectangular



Sizes D:30 H:55cm
Weight 7.5 kg
Material Steel Q235
Paint finish Textured matte/Glossy

Colours



Anna



skinny Anna



Sizes D:50cm H: 40cm
Weight 9 kg
Material Steel Q235
Paint finish Textured matte/glossy

Sizes D:30 H:55cm
Weight 7.5 kg
Material Steel Q235
Paint finish Textured matte/Glossy

Colours



Colours



Swing

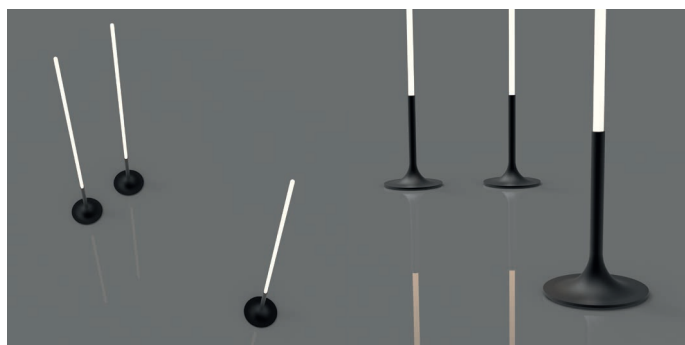
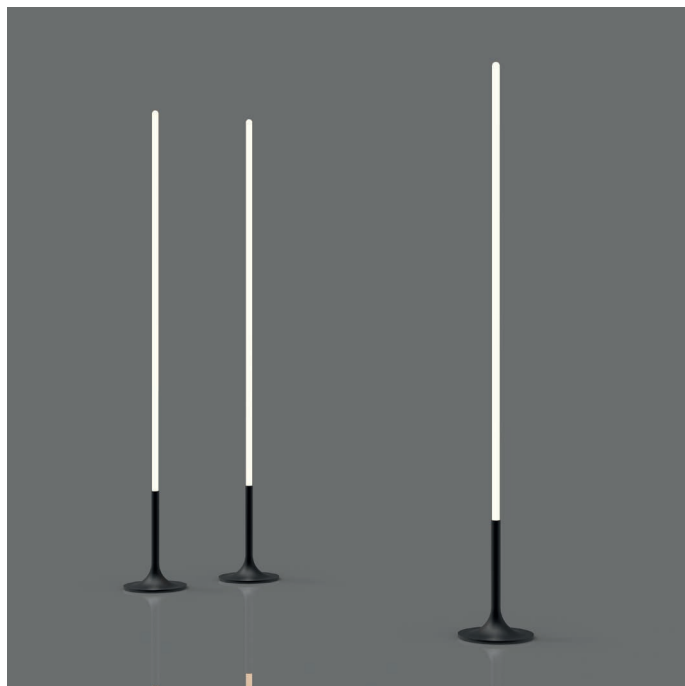


Sizes	D:45cm H: 175cm
Weight	6 kg
Material	Metal
Input V	220V
Power	24W
Intensity and temperature	760Lm /2400K to 4500K
Operation	switch and smart App

Colours



Glow



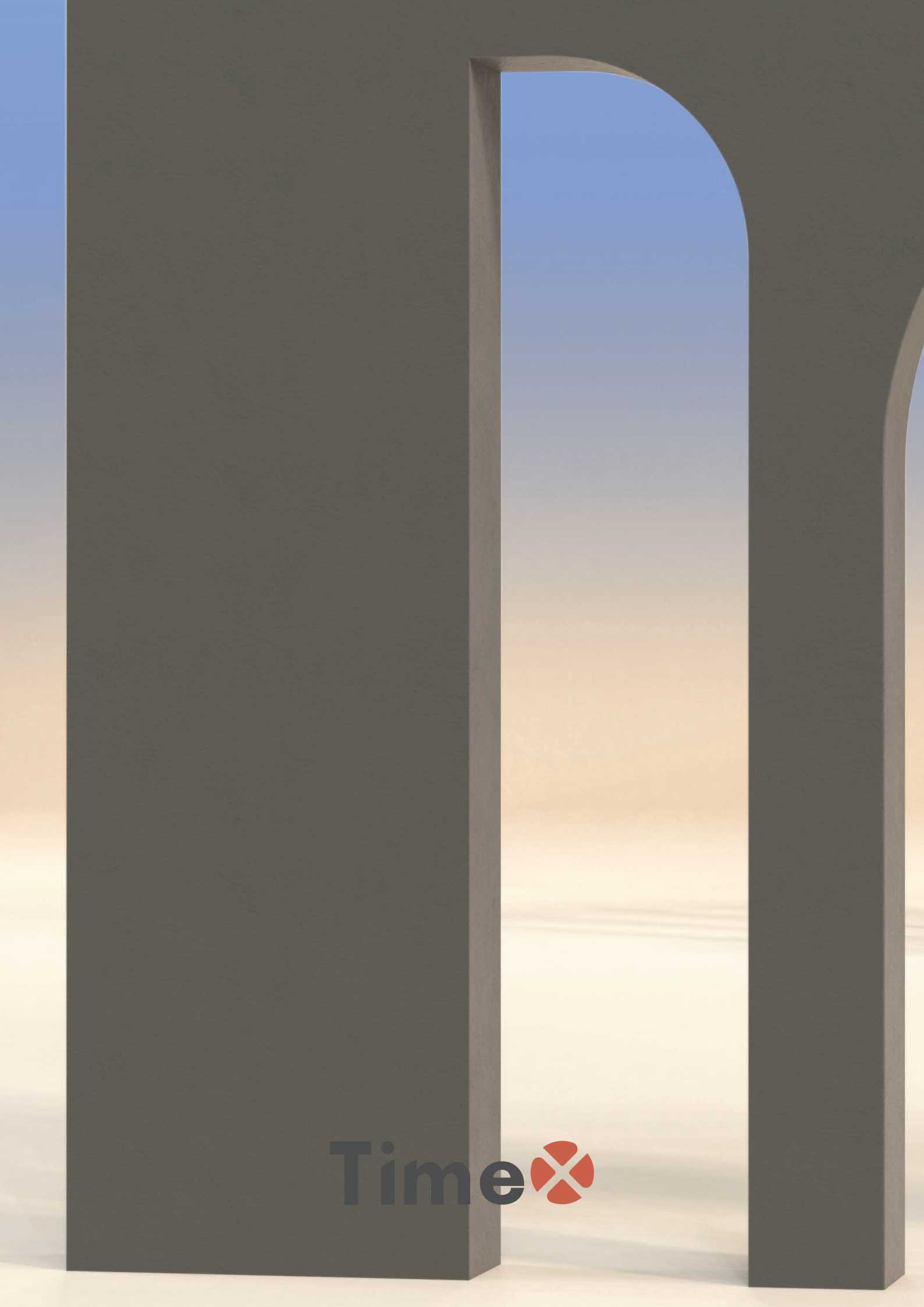
Sizes	D:28cm H: 150cm
Weight	4 kg
Material	Metal
Input V	220V
Power	9W
Intensity and temperature	560Lm /2700K to 6500K
Operation	switch and smart App

Colours



www.timextech.net

Unit 1015, 1/F Block A, New Mandarin Plaza,
N. 14 Science Museum Road, Tsim Sha Tsui,
East KL, Hong Kong.



Time 